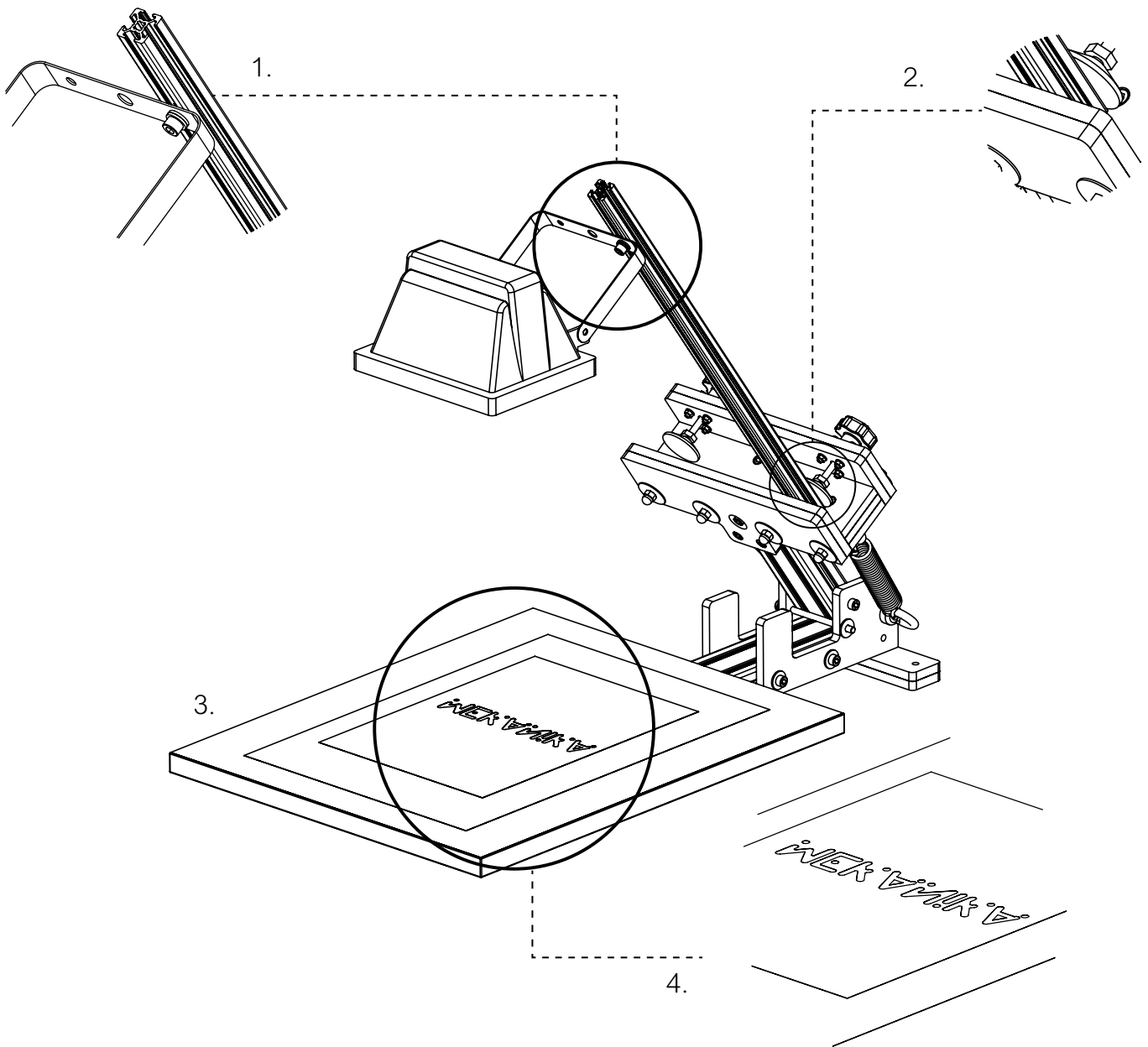


MEK.A.NIK.A

SCREEN PRINTING

EXPOSURE KIT



1. Attach the halogen spotlight to the aluminium profile 20x20x500mm using the M6x10 screw, washers and square nut supplied. The spotlight must be fixed at the end of the profile and be positioned approximately 60cm from the printing surface.

2. Fix the aluminium profile using the clamping system of your press.

3. Once your frame is coated and dry (see Emulsion section), place it on the printing surface of your press. The printing surface must be positioned "inside" the frame.

4. Then place your type on your frame. Be careful to turn the logo over: **it must be in the opposite direction of your final print.**

*The screen master must be placed against the emulsion, do not hesitate to stick it with transparent tape, or better, by covering the whole with a glass or Plexiglas plate.

5. When everything is in place, turn on the halogen spotlight. For a successful exposure, the exposure should last 4 minutes. Use a stopwatch and turn the spotlight off after the time has elapsed.